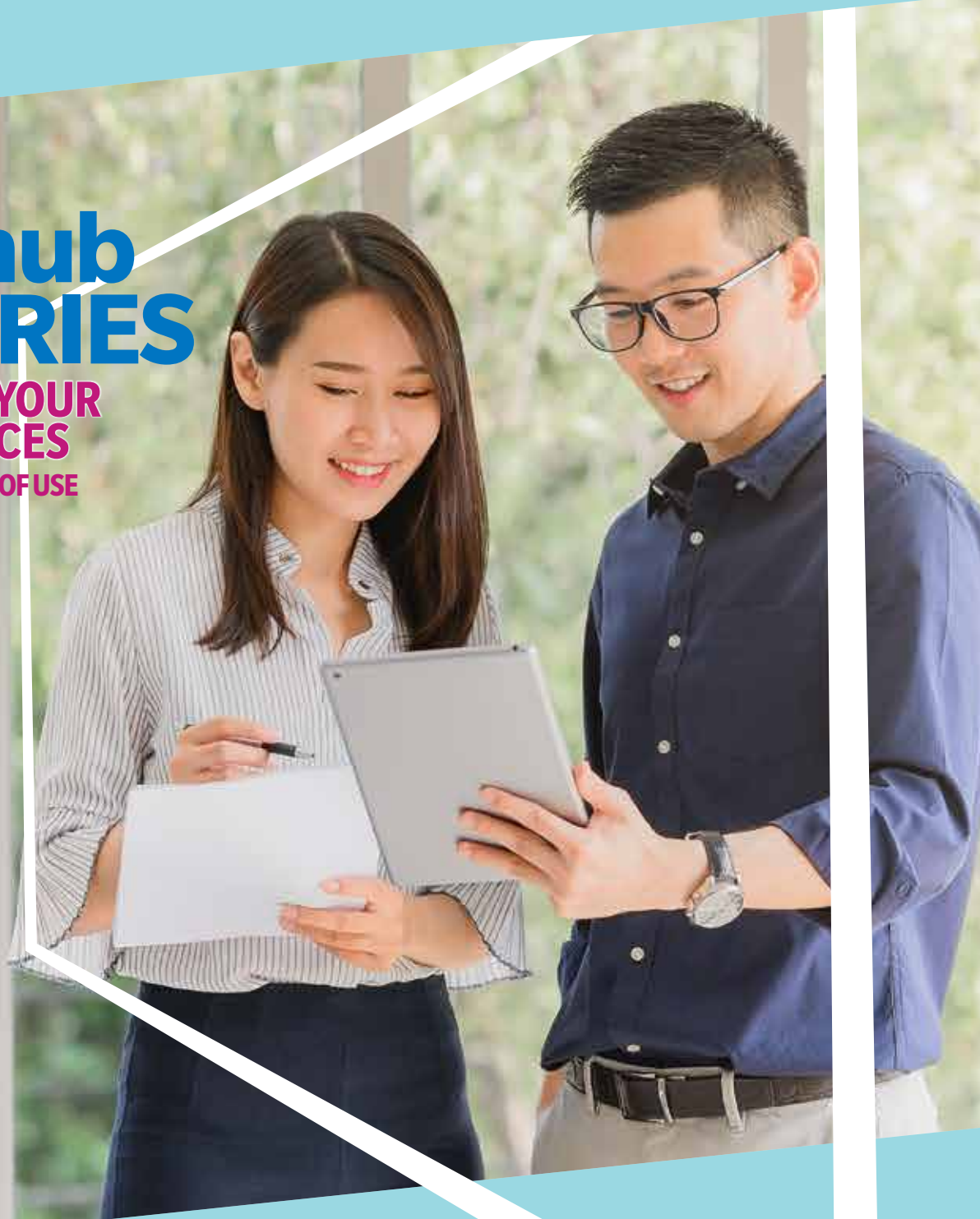


KONICA MINOLTA

bizhub C3321i

bizhub i-SERIES

**SECURE YOUR
RESOURCES**
RETHINK EASE OF USE



bizhub i-Series
A4 Colour Multifunctional Printers

C3321i

Colour 33 PPM
BW 33 PPM

Giving Shape to Ideas

SECURE+ SIMPLE



The new bizhub i-Series secures your business, and is easy to use.

The digital revolution continues to change the way we do business. We require the freedom to readily access data to keep work flowing at the speed business demands. Unfortunately, this can lead to a less secure environment if you're not vigilant. That's why Konica Minolta developed the new bizhub i-Series: to keep you in touch with all of your vital resources in a secure and simple-to-use environment.

From threat notification to proactive security, the new bizhub i-Series is designed to look after your data so you can concentrate on the job at hand with peace of mind. Seamless and productive, the bizhub i-Series has it all.

Empower your business.

SECURITY

- Advanced virus protection and reporting
- Proactive security management
- GDPR-ready for privacy standards compliance

PRODUCTIVITY

- High-speed production
- Intuitive design for a user-friendly experience
- Supports external applications and remote access

EFFICIENCY

- High operability with standardised interface
- Remote and predictive maintenance
- Minimise down time with a maximum paper capacity of 2,100 sheets



C4051i **C3351i**

Multifunctional Printer



C3321i

All-in-one Printer



C4001i **C3301i**

Single-function Printer

CUSTOMISE YOUR BUSINESS



KONICA MINOLTA
MarketPlace

A secure and intuitive workplace is what the new bizhub i-Series brings to your business. Thanks to Konica Minolta MarketPlace, you have access to a constantly evolving array of specialised applications to tailor your bizhub to your office work style and needs. Applications on the platform are constantly being upgraded and developed to stay ahead of the dynamic demands of today's business.

LIFE SHOULD BE SIMPLE

Customise your bizhub i-Series to provide streamlined access to frequently used tasks. The intuitive UI further facilitates efficiency by minimising screen transitions.



C4051i C3351i C3321i C4001i C3301i

Simply easy

A new, simplified user interface and haptic feedback make the operation panel intuitive to users familiar with smart devices. By concentrating on frequently used functions, screen transitions are minimised, making operation easy and convenient.

C4051i C3351i

10.1-inch touch panel

Developed for ease of use, the large-size, multi-touch operation panel provides smooth interaction with the new bizhub i-Series. Thanks to smart-tablet-like usability, the panel delivers intuitive operation, enhanced legibility and efficient workflow.



C3321i C4001i C3301i

Common UI for all models

The bizhub C3321i, C4001i and C3301i are equipped with a 7-inch touch panel with the same easy, one-touch access to functions as other bizhub models.

C4051i C3351i C3321i C4001i C3301i

Choose your style

Switch between two user interface setups to match your office needs. Basic Style features streamlined operation with a customisable choice of intuitive copy functions, while Classic Style displays conventional settings and functions for more advanced

Home screen

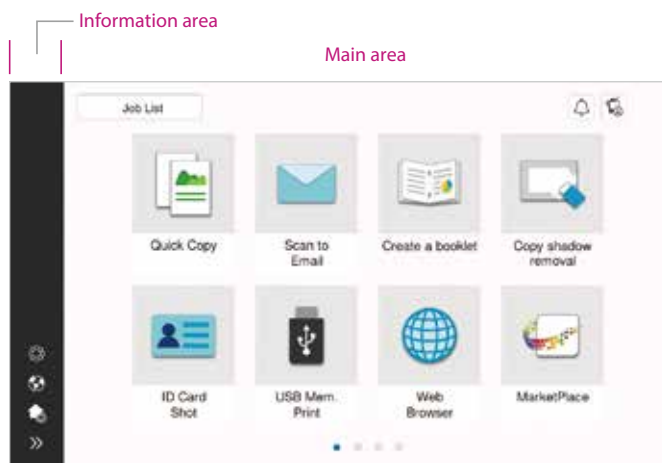
The screen is divided into an Information Area and a Main Area which are customisable.

- Information Area: displays information such as settings menu buttons, ID button, and user name while logged in.
- Main Area: access to functions such as

C4051i C3351i C3321i C4001i C3301i

Customise to optimise

Create folders on the home screen to group functions for ease of use. Increase accessibility for a wider range of users by sorting copy or fax functions into separate folders.



C4051i C3351i C3321i C4001i C3301i

Quick Copy function

The Quick Copy screen easily executes the intended task with minimal screen transitions

- Large buttons allow easy browsing and intuitive operation.
- Options are displayed in a list and can be changed with just one touch.



C4051i C3351i C3321i C4001i C3301i

Made for everyone

Freely adjust the tilt of the new bizhub i-Series operation panel by around 90 degrees to maximise ease of use for every user.



C4051i C3351i C3321i

Functions that simplify jobs

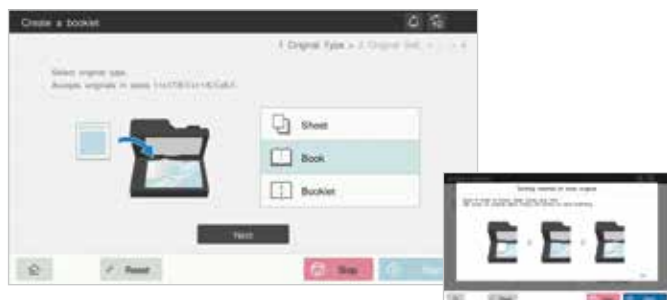
Convenient functions like ID Card Shot are easy to access and even easier to use. Scan both sides and consolidate double-sided documents such as IDs onto a single sheet in just a few easy steps.



C4051i C3351i C3321i

Make a booklet like a pro

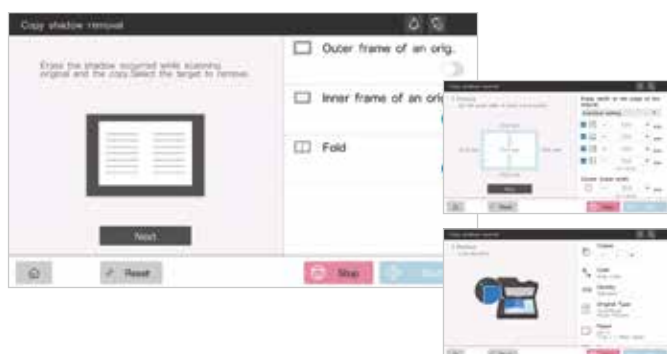
Follow the simple step-by-step guide on screen to create foldable booklets in just a few steps.



C4051i C3351i C3321i

Smarter functions save you time

When you copy or scan a document with the cover open, smart functions like Non-image Area Erase automatically remove shadows from copies of thick documents such as books.



C4051i C3351i

Indicator lights

LED lights on the front of the bizhub C4051i and C3351i indicate data transmission and remind users to pick up their printed documents while gently harmonizing with the office



C4051i C3351i

A voice to guide you

Voice guidance reads aloud fax numbers and describes major functions, keys and key-related operation to facilitate usability.

Available only in enlarged display mode on copy, fax and scan screens. Requires i-Option LK-104 v3, key pad KP-102 and device connection I/F kit EK-P08 or EK-P09.

C4051i C3351i C3321i C4001i C3301i

Be mobile and productive

Install the bizhub Remote Access app on Android or iOS devices connected to the same network as your bizhub i-Series to access an interface similar to the one on the operation panel. Utilize functions remotely without needing to interact with the operation panel or be standing in front of the operation panel.

bizhub Remote Access is available on Google Play and App Store for free. The operation panel cannot be used when bizhub Remote Access is in use.



C4051i C3351i C3321i C4001i C3301i

Touch panel that's sensitive to your needs

The panel can be operated while wearing gloves, greatly reducing the risk of passing germs or infections in the office via hands or fingers. This feature is handy for environments where gloves are often worn, such as spas or salons.

START WITH THE BASICS

| COPY & PRINT |

Equipped with advanced features that revolutionise workflow and productivity, the new bizhub i-Series takes its roots seriously. Sure it can serve as an IoT device, but it's also a powerful performer for copy and print work.



Ready when you are

The new bizhub i-Series is fast and always ready to help you out. Fast warm-up times get you started in 17 seconds or less, while speedy First Copy Out Times, or First Print Out Times for the bizhub C4001i and C3301i, put printed materials in your hands in moments.

	C4051i	C3351i	C3321i	C4001i	C3301i
First Copy/Print Out Time (for colour)	5.4 seconds or less	6.3 seconds or less	7.2 seconds or less	8.7 seconds or less	9.6 seconds or less
First Copy/Print Out Time (for monochrome)	4.8 seconds or less	5.6 seconds or less	6.0 seconds or less	8.0 seconds or less	8.7 seconds or less
Warm-up time (for colour)	15 seconds or less	15 seconds or less	15 seconds or less	17 seconds or less	17 seconds or less
Warm-up time (for monochrome)	13 seconds or less	13 seconds or less	15 seconds or less	16 seconds or less	16 seconds or less

Memory colour to match your imagination

Printer driver settings on the new bizhub i-Series colour match using memory colours by default. Memory colour has higher brightness and saturation, better reflecting the images people have in mind. Konica Minolta's colour matching improves satisfaction with print quality by appealing to people's colour memories.



Conventional method



C4051i

High-quality output

Print at 1,200 dpi resolution for excellent reproduction of small font sizes and detailed design. Outstanding resolution capabilities ensure enhanced legibility of documents and sharp reproduction of fine lines.

Printing at 1,200 dpi slows printing speed.

Easy-to-use paper trays

The lightweight paper trays on the new bizhub i-Series open and close smoothly with a light press or pull motion. Moreover, in the case of a paper jam, the paper trays can be easily removed to fix the jam.



Custom-size paper is just as easy

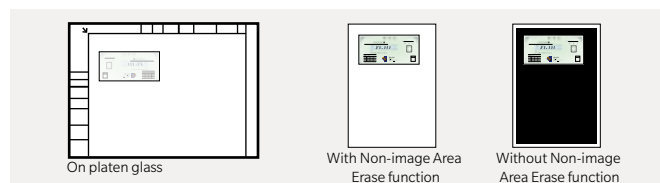
The new bizhub i-Series offers compatibility for custom-sized paper in the front-loading main paper tray. The tray can hold up to 20 post cards or 30 envelopes for easy printing without having to use the side-loading manual feed tray, saving space and increasing efficiency.

Compatible with paper 60 to 210 g/m²

Both the main paper tray and the manual feed tray can feed a wide range of paper weights from 60 to 210 g/m².

Non-image Area Erase

Often times, making copies from odd-size or thick materials can produce unwanted shadows on the outside of the image. Non-image Area Erase on the bizhub C4051i, C3351i and C3321i automatically detects the document area and eliminates the shadow or dark areas surrounding the image. This is ideal for scanning receipts and multiple pages from thick books with the document cover open.



Oversized poster printing

Size up copy or print data to output as a single item up to 4x4 A4 sheets. Join the margins of the printed sheets to create one large poster.

Print from the in-panel web browser

Websites can be displayed on the operation panel and printed directly. Specify pages of web-hosted PDF files to print out only what you need. Convenient for quickly printing maps or company contacts before heading to an appointment.



Print directly from USB

A standard USB port is located to the right of the new bizhub i-Series operation panel. When a USB memory device is inserted, options will automatically appear on the operation panel, allowing you to print directly or save items to the MFP's Box in a few easy steps.

Some USB devices may not be supported. Supported file formats: PDF, compact PDF, JPEG, TIFF, XPS, compact XPS, OOXML (.docx, .xlsx, .pptx).



Email RX Print

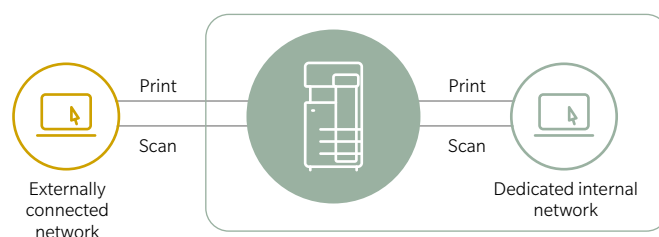
Print files by attaching them to an email and sending to your dedicated bizhub email address.

Supported file formats: PDF, compact PDF, JPEG, TIFF, XPS, compact XPS, OOXML (.docx, .xlsx, .pptx). Requires i-Option LK-110 v2.

Security with Virtual LAN (VLAN) compatibility

Connect to multiple VLAN networks to keep data isolated between networks, without affecting usability. Ideal for offices that secure client's critical data, or for businesses with internal and external networks, company-only and guest networks or shared offices where printers and MFPs are used by multiple groups.

For more details contact your authorized Konica Minolta retailer.



Other copy functions

- Image Quality Mode to match the original (text, text/photo, photo, faint original, map, copied original)
- Output Mode that matches application (double-sided printing, page aggregation, repeating, grouping, sorting, booklets, binding margin)
- Diverse Original Document Scan Modes (continuous scan, binding margin, original loading direction, programmed jobs, blank original removal)
- Copy Mode can be set according to objective (book original, consecutive page copying)
- Selectable Layout Adjustment (enlarge/reduce, consecutive enlargement copying, mirror imaging, image shift)
- Page Insertion is handy for adding a coversheet, insert sheet, chapter separator, insertion page, among others
- Image Additions allows you to easily add date/time, page number, stamp, watermark, head/footer, overlay or registered overlay
- Frame Erase & Erase Outside detect and copy only what you need
- Copy Security functions include Copy Protect

Other print functions

- My Tab Function customises your tab with frequently used settings
- Carbon Copy Mode prints the original document and copy at the same time.
- Auto Trapping Function prints so that there is no white gap around images

Some functions are only available in Classic Mode.

DATA IS DATA

SCAN & FAX

Regardless of where it came from or how you got it, you need to be able to manipulate, send and save documents. The bizhub C4051i, C3351i and C3321i provide high performance scan and fax functions complemented by a host of tools to improve work efficacy.



Double your scanning performance

The bizhub C4051i and C3351i feature a standard Dual Scan Document Feeder (DSDF) that simultaneously scans both sides of each sheet, achieving speeds of up to 90 ipm, or 45 double-sided sheets per minute. Load up to 80* sheets at a time, reducing time and effort digitising documents. Automatic skew correction has been improved, correcting the angle of scanned documents to match the original and deliver more accurate scans with less skew.

*80 g/m²



Multi-feed detection sensors

Ultrasonic waves detect air between pages feeding into the DSDF. When an accidental multi-feed is detected, a preview of the scan is shown on the operation panel so the job can be restarted without restarting the job from the beginning.

Requires optional Upgrade Kit UK-P19.

Easy sort & store for fax data

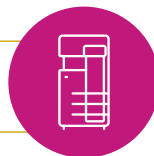
Faxes received by the bizhub C4051i and C3351i can be sorted according to TSI (Transmitting Subscriber Identification) and stored digitally in the Box. Set automatic transfer to PC or email addresses or forward to the SMB shared folder to save time and effort distributing received documents. Make paperless operation easy with improved sorting and forwarding options.

TSI Sorting Function

Company A Fax



Company B Fax

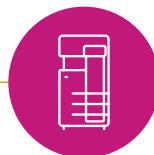


Fax sorted by TSI stored in company A's dedicated box



Forwarded to company B's manager's email address

Forwarded fax



Line 1 forwards the fax to a box



Line 2 outputs the fax

SMB shared folder

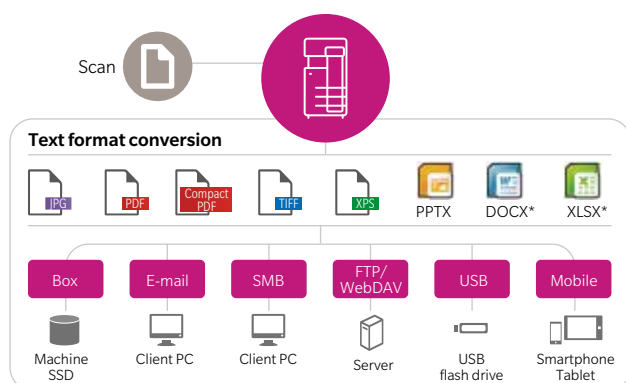


Send data directly to your email

Send scan data directly from the bizhub C4051i, C3351i and C3321i to your email inbox using Scan to Me directly from the home screen. And for enhanced protection, activate the authentication setting for secure transmission.

Efficient format conversion

Scanned originals can be converted into a variety of formats according to what you need them for. Send converted items to a PC or server by email, save them to a USB memory device or the the Box (C4051i and C3351i only) an SMB shared folder, FTP or Web DAV.

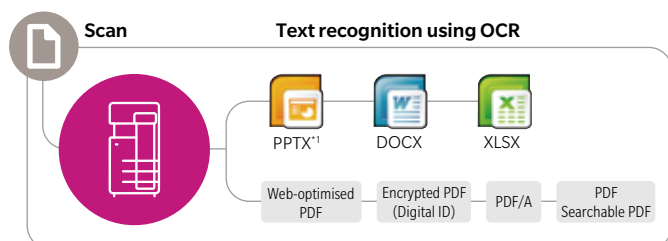


*Requires i-Option LK-110 v2.

Digitise paper documents

Scan and convert to PDF and OOXML formats. Ensure your digitised documents are suitable for their intended use by select the file format to best suit your needs.

Scan to PDF / Scan to OOXML image (with LK-110 v2 installed)



- Applying OCR to a document produces searchable text
- Microsoft Office, etc. enables reuse of images and text.

File conversion formats

PDF/A (long-term archiving)	Standard
Web-optimised PDF (linearised PDF)	Standard
Encrypted PDF (digital ID)	Standard
Searchable PDF (OCR)	Requires LK-110 v2
OOXML file (extension: docx/.xlsx/.pptx) conversion	Requires LK-110 v2 ^{*1}
OOXML file (extension: docx/.xlsx/.pptx) conversion + OCR	Requires LK-110 v2

*1 pptx conversion is a standard function, but the OCR function requires LK-110 v2.

ID Card Scan

Scan and send double-sided documents such as business cards, ID cards or driver's licences with both sides of the document combined in a single file or separated into different files.

Other main scan and fax functions (C4051i, C3351i and C3321i)

- Super G3 Standard achieves high-speed sending of approx. 2 seconds
- Direct Fax, paperless sending from a PC
- Convert received data into a Searchable PDF format* (C4051i, C3351i only)
*Requires i-Option LK-110 v2.
- W-NET FAX compatibility for broad Internet fax interchangeability
- IP Address Fax (T.38 FAX) reduces transmission cost (C4051i, C3351i only)
- Address Storage for a maximum of 2,000 addresses (100 groups)
- Banner Scan scans long originals from the ADF

Cost Accounting & Recovery Tools Sold separately

Dispatcher Paragon



Provides a precise overview of all printing operations within your organisation for smart central accounting which maintains document security. Manage print costs by assigning role and department print quotas and assign codes to individual projects for accurate reporting of costs for your billing convenience. Control your environmental impact by assigning print budgets and enhance your digital workflow by adding optional intelligent scanning to cloud services including Dropbox, Box, Microsoft OneDrive for Business and Microsoft SharePoint Online, directly from the new bizhub i-Series control panel.

Task Automation Tools Sold separately

Dispatcher Phoenix



Dispatcher Phoenix automates digitised document processes from file aggregation to processing and distribution. By dividing processes via pre-set conditions, such as OCR processing, file renaming and barcode scanning, each document is automatically stored at a destination. This delivers one-touch execution of cumbersome tasks. Start times can be scheduled so that digitised tasks can be executed quickly and efficiently. Broad scalability and versatility, including connectivity with cloud services, enables creation of flexible workflows tailored to your business and office environment.

Some functions are only available in Classic Mode.

BETTER SAFE THAN SORRY

Our approach to security is proactive, preventing leaks and addressing security for both digital and paper documents. More importantly, we provide secure access and peace of mind without placing undue burden on your IT department.

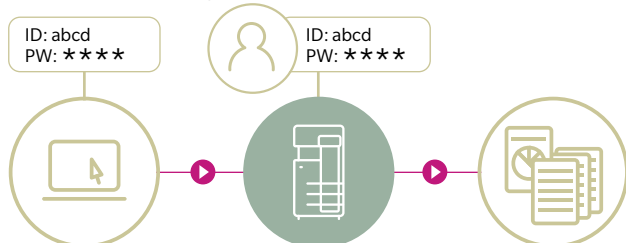


Prioritising security

Nowadays, data protection is a major issue for any company. The new bizhub i-Series delivers advanced security settings through bizhub SECURE, a comprehensive range of services that provide greater protection for customer data stored in the SSD or network settings.

Secure Print

Set a password when sending documents to print from the bizhub C4051i and C3351i via the print driver. The protected document will not print and will be held securely until the correct password is entered on the operation panel. This feature is useful for confidential documents or when you want to give a limited group of users permission to receive copies.



Secure printing using PC login ID

PC login profiles can be used as ID for secure printing. Users can output secure print jobs quickly and easily without needing to input their username and password at the machine each time.

Encrypted SSD

The bizhub C4051i and C3351i are equipped with 256 GB SSD storage, offering heightened security with excellent device compatibility and full-time encryption to maintain a high level of protection.

Multiple ways to authenticate users

User authentication can be customized to best suit your office's scale and pre-existing systems. As well as multiple authentication options for every-day users, single sign-on (SSO) is also supported for enhanced operability without sacrificing security.

Main unit authentication

The new bizhub i-Series allows you to setup authentication using a username and password on the main unit. Set detailed usage restrictions including copy, print, scan and fax.*

*Requires FK-517 Fax Kit.

IC card authentication

Add the optional IC authentication device to add an additional layer of security with non-contact IC cards such as FeliCa. The device supports SSFC (Shared Security Formats Cooperation) specifications which enable integration of wider staff authentication systems with the new bizhub i-Series. Besides IC cards, authentication is possible using NFC-equipped Android devices registered with bizhub via the Konica Minolta Mobile Print app.

Non-contact IC cards are compatible with FeliCa (IDm), SSFC, FCF, FCF (Campus) and MIFARE (UID).



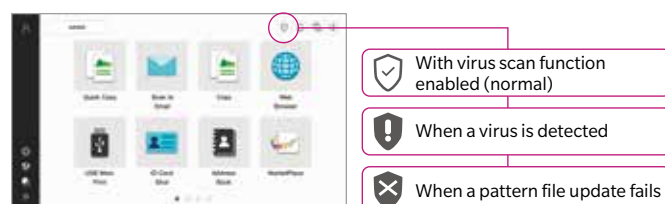
Biometric authentication

If you prefer to avoid having to issue and replace IC cards, Biometric Authentication Device AU-102 is the choice for you. The device uses highly accurate registration of finger veins for quick and easy authentication that supports high-level security systems.

Requires AU-102 Authentication Device and WT-P03 Working Table.

Security you can see

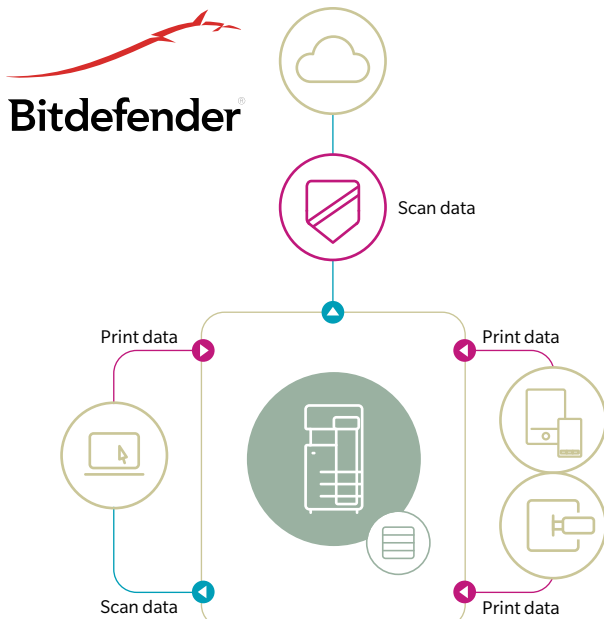
A virus scan icon has been added to the bizhub C4051i, C3351i and C3321i home screen and other panel screens to show when virus scan is enabled. Additionally, you will now be notified via icon changes when a virus is detected or when a pattern file update fails. Use the MFP with greater peace of mind with the virus scan icon visible. Visibility also encourages prompt confirmation when viruses are detected or pattern file updates fail.



Virus scan powered by Bitdefender

Protect your network from threats with virus scanning that covers all data exchanged between the bizhub C4051i, C3351i and C3321i and the external environment, including connections to PCs and mobile or USB devices. Periodic scans can also be scheduled or triggered when needed, covering the MFP's Box, SMB shared folder and SSD. Powered by Bitdefender, the pattern file is updated immediately upon powering up and checked every four hours. A virus scan icon on the home screen keeps users informed of the scan status.

Requires i-Option LK-116 and an internet environment.



Stronger network security

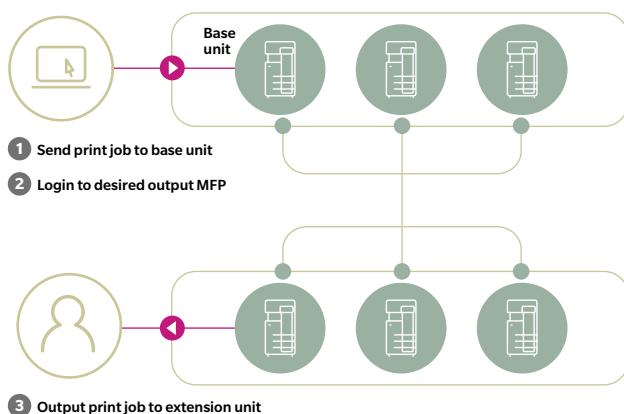
The more powerful wireless LAN module features Wi-Fi WPA3 for increased security. TLS1.3 compatibility enables high-speed communication with reduced risk. The module also supports enhanced security for cloud connectivity.



Serverless printing in a ubiquitous network

Use the bizhub C4051i and C3351i as print servers for printing from any bizhub MFP on your network after authentication. This enables low-cost, serverless printing for up to 100 MFPs.

Requires i-Option LK-114 for all MFPs.



Copy Protect function

Activate Copy Protect to print hidden special characters inconspicuously in the background of documents. Add messages such as "confidential" and dates, preventing unauthorized copying and information leaks.

PDF Encryption on the bizhub C4051i, C3351i and C3321i

• Password

Encrypt PDFs with a password before distribution.

• Digital ID

Only authorised recipients with a private key can decrypt. This is more robust than previous public key systems.

When using Digital ID encryption, the email address (S/MIME send) to which the Digital ID has already been registered must be registered to the MFP's abbreviated address.

• Electronic signature

Electronic signatures certify the author of a document output from the new bizhub i-Series, guaranteeing the document has not been altered and is valid. Third party certifications can also be used.

When using electronic signatures, files should also be encrypted used with password or Digital ID.

High-level ISO/IEC 15408 compliance

The bizhub C4051i and C3351i comply with the Common Criteria for Information Technology Security Evaluation (ISO/IEC 15408). Konica Minolta is in the process of acquiring third-party certification from the Japan-based Information-technology Promotion Agency (IAP). IAP's HDC-PP v1.0 standard certifies that all equipment meets the latest requirements for security.

Information security-related certification obtained for this product (and this system) demonstrates compliance with certification requirements as a result of evaluations based on specified evaluation standards and methods, but does not assure that the product (or the system) is completely without weaknesses.

Other major security features

- SMTP authentication/POP before SMTP authentication enable security to be set when sending emails (C4051i, C3351i and C3321i only)
- SSL/TLS protocol enables encryption of data transmission between networks
- Storage Lock Password prevents unauthorised access to the SSD (C4051i, C3351i only)
- TPM (Trusted Platform Module) safely manages confidential information*

*C4051i and C3351i only. Requires i-Option LK-115 v2.

FASEC 1-compliant fax security (C4051i, C3351i, C3321i)

- Double Address Input prevents erroneous transmission through input error
- Destination Number Confirmation Display prevents erroneous transmission due to incorrect dialling
- Dial Tone Detection function prevents erroneous transmission due to call collision
- Memory Receive & PC Forward prevents paper faxes from being left behind
- Transmission Result Report and Operation Panel Result Check enables verification of fax transmission

Konica Minolta's original fax security (C4051i, C3351i, C3321i)

- Send Approval Password function prevents erroneous transmission through checking
- Recipient Confirmation (CSI matching) Send prevents erroneous transmission through wrong connection
- Voice Guidance when Sending reads out fax number before sending fax to prevent transmission*

*Requires i-Option LK-104v3, Key pad KP-102 and device connection EK-P08 / EK-P09.

- Designated Tray Paper Feed assists security management

WORK SMARTER, FINISH FASTER

A score of options to fit the needs of your business allow you to choose just the amount of output and finishing power you demand.



Small footprint and compact size

Just 420 mm in width and 528 mm in depth, the new bizhub i-Series is around 25% smaller in width and 11% smaller in depth than previous models. This compact size is ideal for on-desk use, shared offices, staff-only commercial spaces or for departmental use as part of a larger office network.



Full-size features at A4 size

The bizhub C4051i and C3351i feature the same 10.1-inch control panel and smooth operability as larger A3 machines. And it doesn't stop there, the security performance, cloud integration and maintenance capability are also equivalent, making these A4 machines ideal for optimising access to MFPs throughout your organisation.



Quietly productive

The Dual Scan Document Feeder (DSDf) features a damper hinge for quiet operation that will not disrupt peaceful environments.

High-speed printing

Output at speeds comparable with larger A3 machines. The bizhub C4051i and C4001i print at an impressive 40 pages per minute for both colour and monochrome. The bizhub C3351i, C3321i and C3301i achieve 33 pages per minute in both colour and monochrome, putting even large volumes of documents in your hands in moments.

Offline stapling

FS-P04 is the perfect solution for offices that need basic finishing capabilities. This compact unit attaches to the optional working table of the new bizhub i-Series to support offline stapling.



As much paper as you need

The new bizhub i-Series is equipped with a large-capacity 500-sheet feed tray and 100-sheet manual feed tray. Boost paper capacity further with additional 500-sheet trays for an impressive maximum capacity of 2,100 sheets of 80 g/m² paper for the bizhub C4051i, C3351i, C4001i and C3301i, and 1,600 sheets of 80 g/m² paper for the bizhub C3321i.



C3321i

Standard Capacity
600 sheets
80 g/m²

Multi manual feed (Standard)
Max. A4 100 sheets

Universal Tray (Standard)
Max. A4 500 sheets

Max. **1,600** sheets
PF-P27 (Option) x 2 trays
Max. 1,000 sheets

Desk DK-P04 (Option)



C4051i

C3351i

Standard Capacity
600 sheets
80 g/m²

Multi manual feed
(Standard)
Max. A4 100 sheets

Max. **1,100** sheets



PF-P27 (Option) x 1 tray
Max. A4 500 sheets

Max. **2,100** sheets



PF-P27 (Option) x 3 trays
Max. 1,500 sheets



Desk DK-P04 (Option)



C4001i

C3301i

Standard Capacity
600 sheets
80 g/m²

Multi manual feed (Standard)
Max. A4 100 sheets

Universal Tray (Standard)
Max. A4 500 sheets

Max. **2,100** sheets
PF-P27 (Option) x 3 trays
Max. 500 sheets

GO WHERE YOU WANT

Business today is not centred around being at the office all day long. Whether at home or on the move, you are connected to your office and resources, and the new bizhub i-Series is there at your disposal.



Mobile connectivity

Connect with NFC-equipped Android devices

The NFC touch area on the front of the bizhub allows users to print from and scan to NFC-equipped Android devices using the Konica Minolta Mobile Print app. After registering the device to your bizhub i-Series using the app, simply hold the device over the NFC touch area to print a selected file. Scanned documents can be saved to the device the same way. NFC Android devices can also be used for user authentication, allowing users to log in at the bizhub by touching their device.

Wireless LAN environment required.

Connect with iOS devices

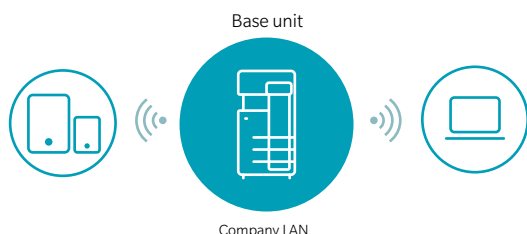
The iOS action button for printing is also supported, making data sharing from a large range of apps smooth and simple. iOS devices can also be used for user authentication, allowing users to log in at the bizhub using Bluetooth LE.

Requires EK-P09 Local Area Interface Kit and Wireless LAN.

Secure and simple

Create a local wireless LAN environment with only the new bizhub i-Series, separate from your office LAN, with Simple Access Point (AP) Mode. Bypassing the main office LAN allows secure connection to mobile devices or laptops brought in from outside.

Requires UK-221 Upgrade Kit.



Scalable to meet your needs

Konica Minolta MarketPlace is pre-installed on the bizhub C4051i, C3351i, C4001i and C3301i giving users access to a wide range of convenient applications to tailor the functionality of the new bizhub i-Series.

Compatible mobile print services



Konica Minolta Mobile Print

A simple and intuitive user interface that enables fast, secure connection to mobile devices. Once a mobile device is registered, users can send, receive and share data securely, as well as print documents and images directly from their device. Authentication Print and Secure Print are also supported for worry-free printing of confidential documents.



AirPrint

Apple's native printing system is supported for iOS and Mac OS devices. Connect to the new bizhub i-Series via wireless LAN without having to install any applications or printer drivers on the device.

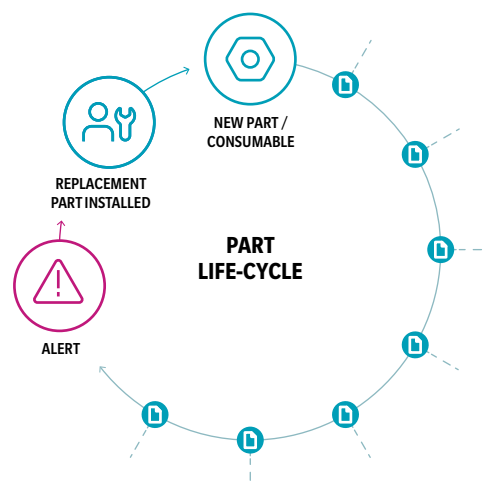


Mopria Print Service & Mopria Scan

Print from and scan to Android devices on your Wi-Fi network using Mopria Alliance apps.

Worldwide Remote Service Platform

The new bizhub i-Series features intelligent self-diagnostic and remote maintenance capabilities. This allows smart prediction of optimum parts and consumables replacement for minimised downtime.



Data collected for part/consumable replacement predictions

For more information, please contact your authorised Konica Minolta retailer.

THINK ABOUT IT, WE DO

At Konica Minolta, we are in the business of making business run better. And that's never at the expense of sustainability or environmental responsibility.



Made responsibly

Konica Minolta's proprietary chemical processing is enhancing the strength and flame resistance of recycled plastics. The new bizhub i-Series is constructed with approximately 60% recycled materials by surface area.

Energy conscious

Power-saving logic on the new bizhub i-Series has been improved, dropping sleep mode power consumption to an industry-leading 0.4 W, reducing environmental impact and total cost of ownership (TCO).

Sustainability is a priority

Green Products Certification is Konica Minolta's in-house evaluation system for environmental performance and sets a rigorous standard for sustainability and environmental consideration. All models in the new bizhub i-Series have been certified as Green Products.

<https://www.konicaminolta.com/about/csr/environment/activity/solution.html>

Good Packaging Award

The new bizhub i-Series is delivered protected by award-winning styrofoam Air Cushion packaging materials. Cushions are carefully distributed around the bizhub for maximum protection and minimum waste.

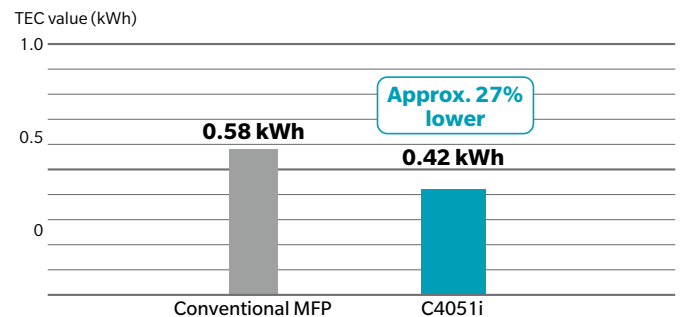


Setting the tone for smart energy use

Konica Minolta's high-performance polymerised Simitri V toner requires less heat for fixing, using a temperature around 15° C lower than previous models, saving energy on every print. Simitri V toner also uses less energy during the manufacturing process.

Low energy consumption

Energy efficient features on the new bizhub i-Series mean that typical energy consumption (TEC) easily clears the values stipulated in the International Energy Star Program Version 3.0. Improved thermal insulation and a high-efficiency heater prevent heat loss and reduce warm up times for efficient operation and minimised environmental impact.



The TEC value for International Energy Star Program Ver 3.0 application. Conventional model value is converted.

100% renewable energy

Konica Minolta is contributing to reducing global CO₂ by using certified renewable electricity and solar power throughout production. All Konica Minolta Group production facilities use 100% renewable energy. Work is currently under way to expand the use of renewable energy at all sales bases around the world.

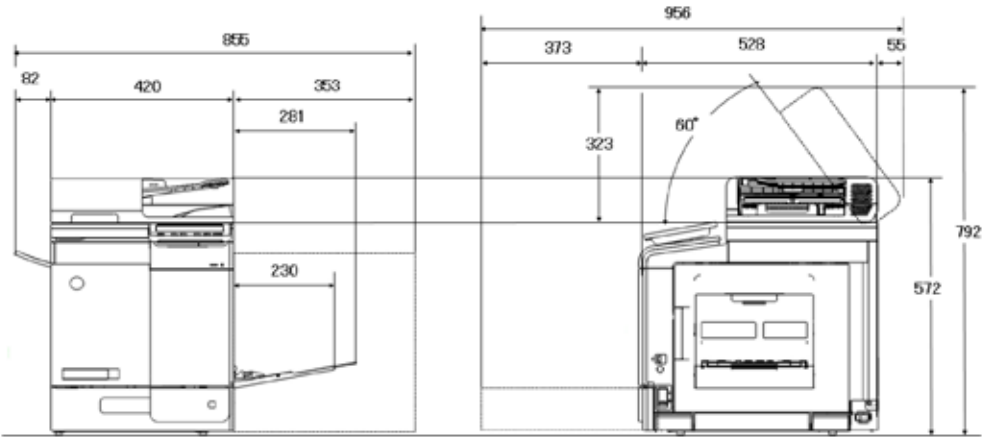
Environmental standards

Konica Minolta products are designed and manufactured in compliance with the leading global environmental standards.

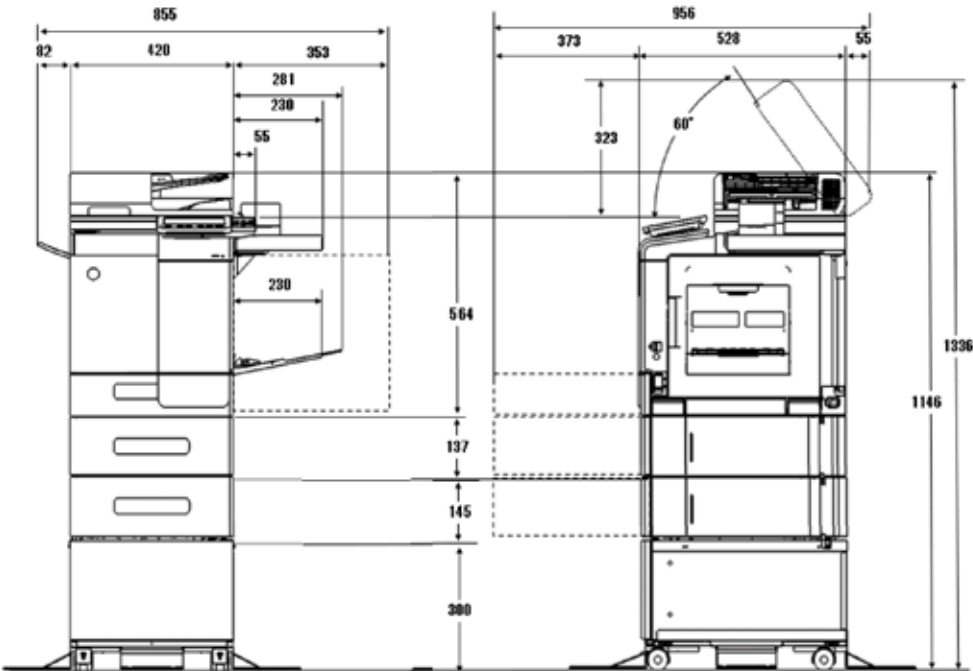


PRODUCT SPACE REQUIREMENTS

bizhub C3321i standard configuration



bizhub C3321i
WT-P03+PF-P27x2+DK-P04



CUSTOMER BENEFITS



Intuitive operability
Operate the bizhub like a smartphone or tablet with fully customised user interface



Mobile connectivity
Print anytime from anywhere with Konica Minolta's innovative mobile technologies



Security
Secure network integration, data encryption, storage data overwrite, and advanced user authentication



Application ecosystem
Enhanced efficiency thanks to Konica Minolta's extensive applications portfolio



Productivity
Reliability, high-speed scanning and printing, combined with powerful finishing functions



Sustainability
Numerous eco features reduce energy consumption and costs

OPTIONS

1 ENHANCED FEATURES

Antivirus
LK-116

2 CONNECTIVITY

Fax board
FK-517

Wireless LAN
UK-221

USB I/F kit
EK-P08

USB I/F kit w Bluetooth LE
EK-P09

NFC I/F kit
EK-P10

I/F cable for CSRC modem
EK-P11

Biometric authentication
AU-102

Card authentication
ID card reader

I/F kit without Bluetooth
MK-P08

I/F kit with Bluetooth
EK-P09

3 OTHERS

10-Key pad
KP-P03

Keyboard holder
KH-P02

Working table
WT-P03

4 MEDIA INPUT

Paper tray
PF-P27

Height adjustment unit
PF-P22

Copier desk
DK-P04

5 MEDIA OUTPUT

Off-line stapler
FS-P04



LEGEND

- Mandatory option
- Option
- This option can only be installed with the respective option above it

FINISHING FUNCTIONALITIES



Duplex



Corner
Stapling
(offline)

DESCRIPTION

ENHANCED FEATURES

LK-116 Antivirus	Bitdefender® antivirus provides real time scanning of all incoming and outgoing data
------------------	--

CONNECTIVITY

FK-517 Fax board	Super G3 fax, digital fax functionality
UK-221 Wireless LAN	Wireless LAN and wireless LAN Access Point Mode
EK-P08 USB I/F kit	USB interface kit
EK-P09 USB I/F kit	USB interface kit with Bluetooth LE
EK-P10 NFC I/F kit	To connect with Android mobile devices
EK-P11 I/F cable for CSRC modem	GPRS modem connection for CSRC
AU-102 Biometric authentication	Finger vein scanner
ID card reader	Various ID card technologies

OTHERS

KP-P03 10-Key pad	For use instead of touchscreen
KH-P02 Keyboard holder	To place USB keyboard
WT-P03 Working table	To place authentication device

MEDIA INPUT

PF-P27 Paper tray	500 sheets, A4, 60-90 g/m ²
PF-P22 Height adjustment unit	To achieve comfortable height for operation
DK-P04 Copier desk	Provides storage space for print media and other materials

MEDIA OUTPUT

FS-P04 Off-line stapler	20-sheet off-line stapling
-------------------------	----------------------------

TECHNICAL SPECIFICATIONS

SYSTEM SPECIFICATIONS

System speed A4	Up to 33/33 ppm (mono/colour)
Autoduplex speed A4	Up to 33/33 ppm (mono/colour)
1st copy out time A4	6.0/7.2 sec. (mono/colour)
Warm-up time	Approx. 13/15 sec. (mono/colour) ¹
Imaging technology	Laser
Toner technology	Simitri® V polymerised toner
Panel size/resolution	7" / 800 x 480
System memory	4,096 MB (standard/max)
System storage	16 GB (standard)
Interface	10/100/1,000-Base-T Ethernet; USB 2.0 / USB 3.0; USB host; Wi-Fi 802.11 b/g/n/ac (optional)
Network protocols	TCP/IP (IPv4 / IPv6); SMB; LPD; IPP; SNMP; HTTP(S); Bonjour
Automatic document feeder	Up to 80 originals; A6-A4; 50-128 g/m ² ; Dualscan ADF
Printable paper size	A6-A4; customized paper sizes
Printable paper weight	60-210 g/m ²
Paper input capacity	600 sheets / 1,600 sheets (standard/max)
Paper tray input (standard)	1x 500; A6-A4; custom sizes; 60-210 g/m ²
Paper tray input (optional)	PF-P27 500 sheets; A4; 60-90 g/m ²
Manual bypass	100 sheets; A6-A4; custom sizes; 60-210 g/m ²
Finishing modes (optional)	Group; Sort; Staple (offline)
Automatic duplexing	A4; 60-210 g/m ²
Output capacity	Up to 250 sheets
Duty cycle (monthly)	Rec. 6,500 pages; Max. ² 96,000 pages
Toner lifetime	Black up to 13,000 pages CMY up to 9,000 pages
Imaging unit lifetime	Black up to 200,000 pages (imaging unit) CMY up to 100,000 pages (imaging unit)
Power consumption	220-240 V / 50/60 Hz; Less than 1.45 kW
System dimension (W x D x H)	420 x 528 x 572 mm (without options)
System weight	Approx. 38.4 kg (without options)

PRINTER SPECIFICATIONS

Print resolution	600 x 600 dpi; 1200 x 1200 dpi
Page description language	PCL 6 (XL3.0); PCL 5c; PostScript 3 (CPSI 3016); XPS
Operating systems	Windows 10 (32/64); Windows 11; Windows Server 2016; Windows Server 2019; Windows Server 2022; macOS 10.16 or later; Unix; Linux; Citrix
Printer fonts	80 PCL Latin; 137 PostScript 3 Emulation Latin
Mobile printing	AirPrint (iOS); Mopria (Android); Konica Minolta Mobile Print (iOS/Android) optional: WiFi Direct

SCANNER SPECIFICATIONS

Scan speed	Up to 28/28 ipm in simplex (mono/colour) Up to 56/56 ipm in duplex (mono/colour)
Scan resolution	Up to 600 x 600 dpi
Scan modes	Scan-to-eMail (Scan-to-Me); Scan-to-SMB (Scan-to-Home); Scan-to-FTP; Scan-to-USB; Scan-to-WebDAV
File formats	JPEG; TIFF; PDF; Compact PDF; Encrypted PDF; XPS; Compact XPS; PPTX
Scan destinations	2,000 destinations + 100 groups; LDAP support

COPIER SPECIFICATIONS

Copy resolution	600 x 600 dpi
Gradation	256 gradations
Multicopy	1-9,999
Original format	Max. A4
Magnification	25-400% in 0.1% steps; Auto-zooming

FAX SPECIFICATION

Fax standard	Super G3 (optional)
Fax transmission	Analogue; i-Fax; Colour i-Fax; IP-Fax
Fax resolution	Up to 600 x 600 dpi
Fax compression	MH; MR; MMR; JBIG
Fax modem	Up to 33.6 Kbps
Fax destinations	2,000 single + 100 groups

SYSTEM FEATURES

Security	IP filtering and port blocking; TLS1.2/1.3 network communication; IPsec support; IEEE 802.1x support; User authentication; Kerberos; Storage data overwrite; Storage data encryption (AES 256); Confidential fax; Print user data encryption optional: Antivirus realtime scanning (Bitdefender®)
Accounting	Up to 100 user accounts; Active Directory support (user name + password + e-mail + smb folder); User function access definition; optional: Biometric authentication (finger vein scanner); ID card authentication (ID card reader); Authentication by mobile device (Android/iOS)
Software	Data Administrator; Web Connection; Driver Packaging Utility; Log Management Utility

¹ Warm-up time may vary depending on the operating environment and usage

² If the maximum volume is reached within a period of one year, then a maintenance cycle must be performed

- All specifications refer to A4-size paper of 80 g/m² quality.
- The support and availability of the listed specifications and functionalities varies depending on operating systems, applications and network protocols as well as network and system configurations.
- The stated life expectancy of each consumable is based on specific operating conditions such as page coverage for a particular page size (5% coverage of A4). The actual life of each consumable will vary depending on use and other printing variables including page coverage, page size, media type, continuous or intermittent printing, ambient temperature and humidity.
- Some of the product illustrations contain optional accessories.
- Specifications and accessories are based on the information available at the time of printing and are subject to change without notice.
- Konica Minolta does not warrant that any specifications mentioned will be error-free.
- All brand and product names may be registered trademarks or trademarks of their respective holders and are hereby acknowledged.

SimitriV 



Konica Minolta Business Solutions Asia Pte Ltd

21 Media Circle

#08-01 Infinite Studios

Singapore 138562

Tel: +65 6563 5533

Fax: +65 6561 9879

Email: sales@konicaminolta.sg

www.konicaminolta.com

PRESENCE IN THE REGION

BANGLADESH . BRUNEI . CAMBODIA . INDONESIA . LAOS . MALAYSIA . MAURITIUS . MYANMAR . PHILIPPINES . SINGAPORE . SRI LANKA . THAILAND . VIETNAM

Our organisation is certified according to ISO27001, ISO9001 and ISO14001 standards.



Please scan for more information on
the bizhub C3321i

V0625