



KONICA MINOLTA



environmental
social
governance

ENVIRONMENTAL, SOCIAL AND GOVERNANCE (ESG) FACTS AND FIGURES

We aim to be a company that contributes to the sustainable growth of society and individuals alike. That's why we've created an environmental, social and governance framework to address these global issues.

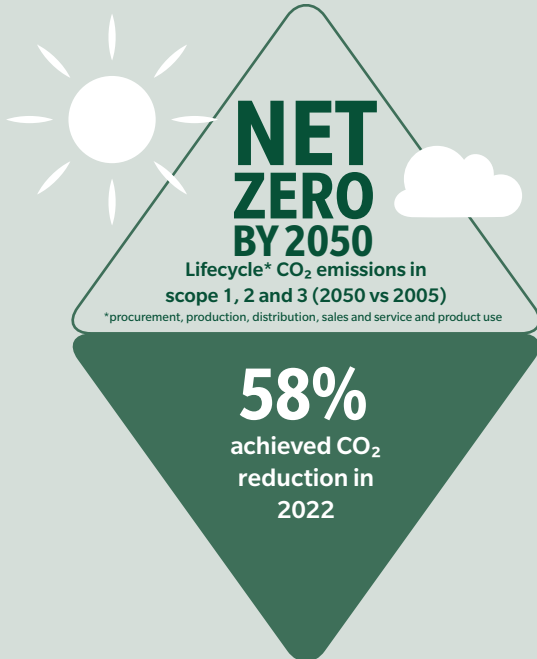


ENVIRONMENTAL



CLIMATE CHANGE & CLIMATE MITIGATION

Avoiding and reducing energy consumption and greenhouse gas emissions



108,000 TONNES OF CO₂
reduction from 2005 to 2021 in production

8,900
on-site customer visits

310,740
kilometres

140 TONNES
of greenhouse gas emissions have been saved in Europe with AIRe Link, our remote visual support tool, since it was launched.

(as of January 2023).

UP TO 25% LESS CO₂ EMISSIONS IN THE OPERATION OF MFPS COMPARED TO PREVIOUS MODELS

The largest energy consumption, over 60%, occurs when the toner is fixed to the paper. Our Simitri® V toner reduces the fixing temperatures in the bizhub i-Series by 15°C. Combined with a new fixing device, this helps to significantly reduce the power consumption.



CLIMATE CHANGE & CLIMATE MITIGATION

Substituting GHG emitting power sources with renewable energy

Member of
RE100

12.3%
renewable energy
use globally

TARGET
**100% RENEWABLE
ENERGY BY 2050
WORLDWIDE**

SITES USING 100% RENEWABLE ENERGY

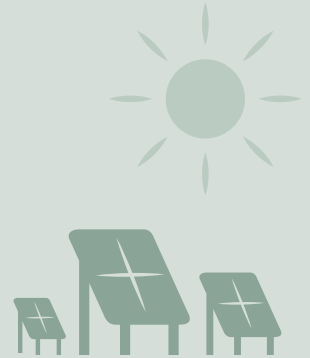
(As of January 2022)

- 📍 Konica Minolta Business Solutions Europe and its subsidiaries: Austria, Belgium, France, Germany, Great Britain, Lithuania, the Netherlands, Norway, Portugal, Spain and Sweden.
- 📍 3 factories for MFP and production printing devices in China & Malaysia.
- 📍 1 toner factory in France.

50%

of MFPs and all production printing devices (on a value basis) for the European market are produced with renewable energy.

(As of January 2022)



RESOURCES & CIRCULAR ECONOMY

Reducing

TOWARDS ZERO NATURAL RESOURCES

Make products from more than 90% circulated resources (recycled materials and biomaterials) by 2050

Reducing
the use of
resources by
using recycled
materials

Toner bottles are made up of

60% RECYCLED PLASTICS

Production printing devices contain up to

36% RECYCLED PLASTICS

(according to calculation based on EPEAT as of 04/2024).

Office devices contain up to

42.9% RECYCLED PLASTICS

(according to calculation based on EPEAT as of 04/2024).

(As of April 2024)

**20,000
TONNES**

of waste reduction
from 2005 to 2021 in
production

83%

weight reduction
of packaging*

* for certain print models

AND

75%

reduction of
weight of shipments
through new
packaging material*

* for certain print models



ALL DEVICES

can easily process recycled paper according to EN12281, helping reduce fresh fibre paper production.



RESOURCES & CIRCULAR ECONOMY

Reusing

bizhub Refreshed

We have refurbishment programmes for MFPs in some European countries. A bizhub Refreshed device offers **savings of ~70%** in greenhouse gas emissions (depending on the device) compared to a new device regarding production and distribution emissions*.



*The figures are based on assumptions and follow the "Greenhouse Gas Protocol Product Life Cycle Accounting and Reporting Standard" (GHG Protocol) carried out by ClimatePartner.



In Europe and Japan, parts of toner bottles and cartridges are refurbished and refilled.



RESOURCES & CIRCULAR ECONOMY

Recycling

CLEAN PLANET PROGRAM*

Recycles used consumables of office and production printing devices.



*Available in Austria, Germany, Belgium, Denmark, Finland, Italy, Netherlands, Norway and Sweden (as of January 2023)

87%

of waste is turned into secondary raw materials.



10,000

Customers in Europe



Globally*, out of 13,600 tonnes of end-of-life office equipment,

99%

of materials were recycled in FY2021.

*In Japan, China, the United States and Europe



**INGEDE
CERTIFIED**

When recycling paper, it's vital that any toner can be removed from the paper easily. Our production printing devices use certified easy de-inkable toners.



POLLUTION

INDOOR AIR QUALITY

We offer air cleaning units for cutting pollution in the operation of printing devices in workspaces. They avoid up to 98% of the ultra-fine particle emissions*.

*Measured by the Blue Angel mark specifications.

SHIFTING TRANSPORTATION FROM AIR AND ROAD TO WATER AND RAIL

Konica Minolta aims to cut pollution through transport, with less environmental impact Europe-wide.

90%

of the transport between Rotterdam, the Netherlands (where goods arrive from Asia) and the European distribution centre in Emmerich, Germany, takes place by ship.

40%

of the transport between Emmerich and Italy takes place by rail.

